

Postgraduate Education Practitioners' (**'PEP'**) Network

03 July 2025

Welcome

Susanna Broom
Head of the Researcher School
University of Sussex

Kerri Gardiner
Head of the Postgraduate Research Office
University of Cambridge



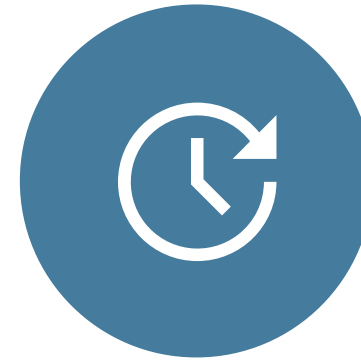
Today's topics:



ABOUT PEP



**NETWORKING AND
BUDDYING**



FUTURE EVENTS

About PEP

- History
- Aims to:
 - Provide a supportive environment for colleagues to share their experiences, enabling peer-to-peer support
 - Keep colleagues informed of sector developments
 - Support colleagues' professional development
 - Champion the critical role played by postgraduate education practitioners and the specialist nature of their expertise

About PEP

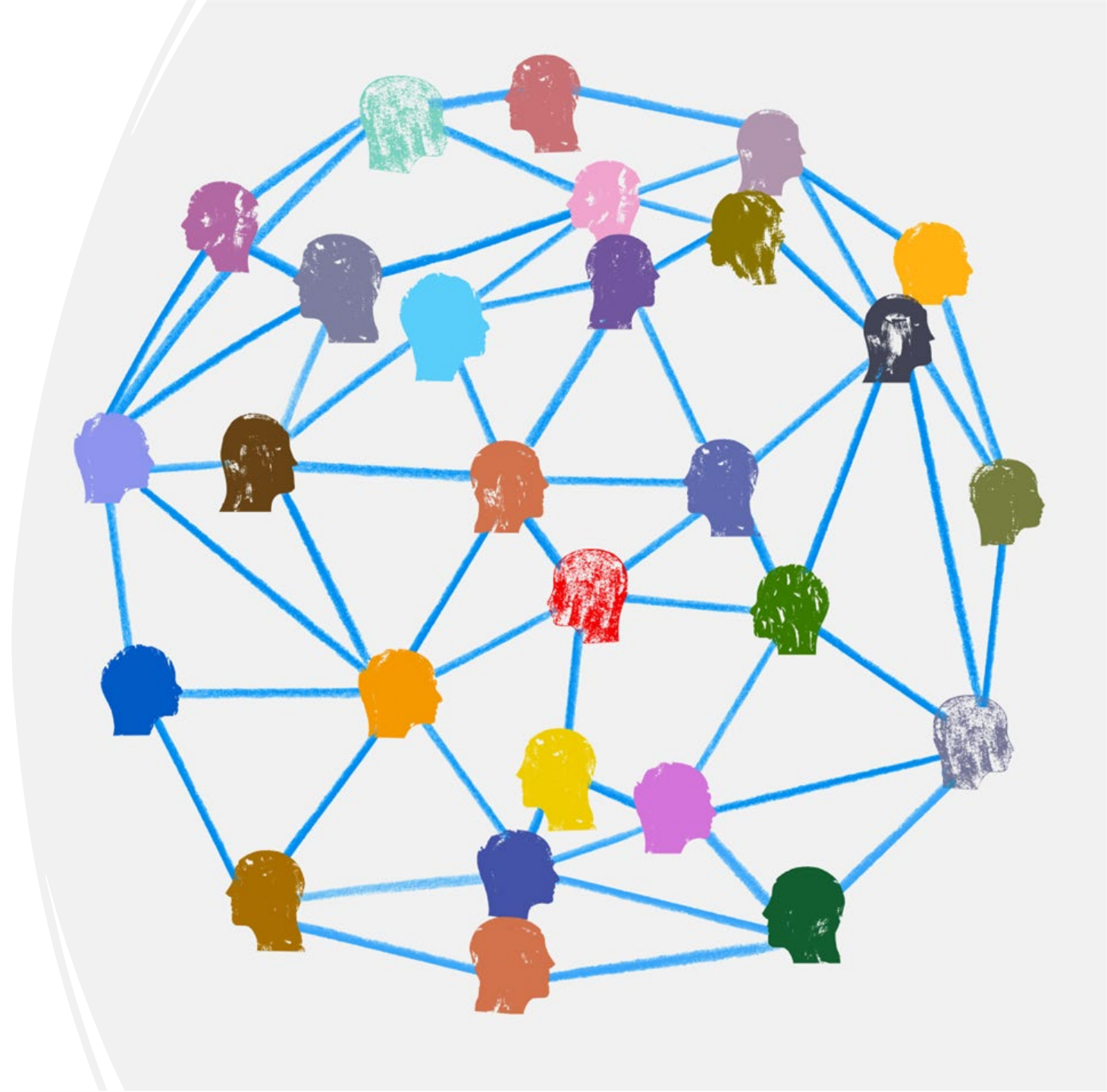
- Current membership stands at 614 colleagues from 171 institutions
- We hold a range of events throughout the year
- We're always keen to hear your ideas for topics
- Network support featured in our conference session last year and we've been acting on the feedback over the last 12 months

Not already a member of PEP?

Read more here: <https://ukcge.ac.uk/networks/pep>

Sign up here: <https://ukcge.ac.uk/communication-preferences>

Human Bingo



New Buddying Scheme!



About the PEP Buddying Scheme

The scheme seeks to enhance the network's community of practice by providing a mechanism to connect network members with one another for the purposes of informal support. Specifically, it aims to:

- enable informal peer-to-peer support for colleagues who are new to PGR or who have a particular issue about which they need some guidance or support;
- facilitate interactions between network members and the development of mutually beneficial working relationships;
- facilitate the sharing of guidance and good practice.

What is a buddy?

Buddies will:

- provide advice and share experiences on matters within their areas of interest and expertise;
- create a safe space to share issues or challenges, respecting boundaries of confidentiality;
- signpost to relevant guidance and other materials.

Buddies will not:

- act as unpaid consultants; proofread written material; provide counselling on wellbeing matters or expert careers guidance; arrange internships or job shadowing opportunities.



Initial pool of buddies



How to get involved

- Make sure you're signed up to be a PEP Network Member:
<https://ukcge.ac.uk/communication-preferences>.
- Visit the PEP Network webpages to read more about the scheme (via the QR code here or: <https://ukcge.ac.uk/pep-buddy-scheme>).
- If you want a buddy, please complete the request form on the webpages.
- If you'd be interested in acting as a buddy, please contact Susanna or Kerri (emails at the end of this presentation).



Questions?



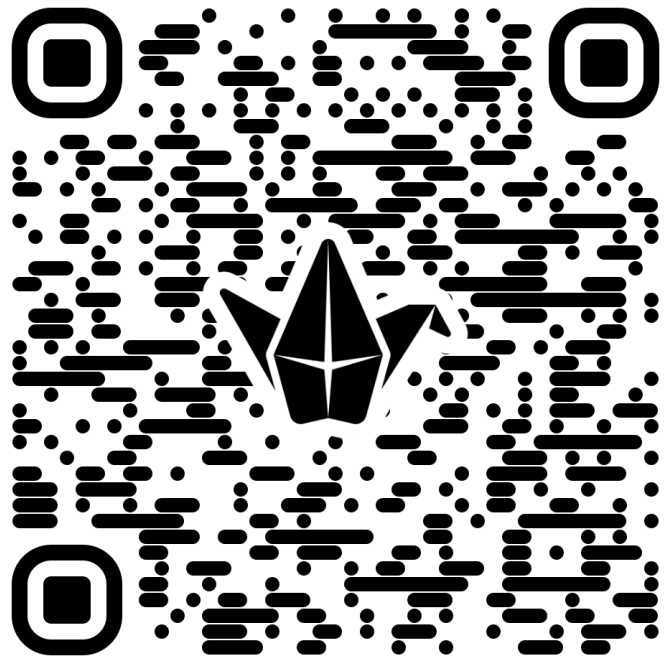
2025/26 PEP sessions



Session types and timings

- New to PGR Sessions in c. November and May
- PEP Network Clinics roughly every two months
- Annual workshop in c. May (online in 2025)
- Segment at the annual conference 2026
- Interspersed with 'PEP' branded online sessions, depending on the topics
- To view and sign up to sessions, please visit the UKCGE website:
<https://ukcge.ac.uk/events/forthcoming-events>

Breakout discussion



Breakout discussion

[https://padlet.com/
ukcgelichfield/
postgraduate-education
-practitioners-
jdclafiljxhkjru9](https://padlet.com/ukcgelichfield/postgraduate-education-practitioners-jdclafiljxhkjru9)



Questions?

[https://ukcge.ac.uk/
networks/pep](https://ukcge.ac.uk/networks/pep)



Thank you!

Susanna Broom
Head of the Researcher School
University of Sussex
s.broom@sussex.ac.uk

Kerri Gardiner
Head of the Postgraduate Research Office
University of Cambridge
kerri.gardiner@admin.cam.ac.uk

