



# Yorkshire Consortium for Equity in Doctoral Education

## Webinar Slides: What is a PhD?

The following slides were used during a webinar for UGs and PGTs interested in applying for a PhD. The webinar explained what a PhD is, the role of a supervisor, the workload shifts and key checkpoints during the PhD process, and featured a Q&A with some current PhD students.

**Produced by:** George Gisborne (University of Leeds)

**2nd October 2024**

*YCEDE cannot guarantee that all information contained in this resource is accurate at the time of reading, particularly with regard to dates, deadlines, and funding availability.*

**Suggested Audience:** Students

**Suggested Sub-Audience:** Prospective Applicants

*This resource is intended for use in improving equity and outcomes for ethnically minoritised individuals interested in doctoral study or careers in research. This resource was produced by the staff named above on behalf of the YCEDE project. Please ensure appropriate credits are clearly included if you use this resource.*

TO CITE THIS

Gisborne, G. (2024). *Yorkshire Consortium for Equity in Doctoral Education* [online] available at:  
<https://ycede.ac.uk/toolkit/academic-staff-resources/pre-application/webinar-slide-pack-what-is-a-phd/>



**Yorkshire Consortium for  
Equity in Doctoral Education**

# What is a PhD really? – Revealing the hidden curriculum

Wednesday 2 October 2024

Dr Tiffany R Holloman – University of Bradford  
George Gisborne – University of Leeds  
Lenka Kaur – University of Bradford  
Zenab Sabahat – PhD student, University of Bradford  
Dr Syka Iqbal - Assistant Professor in Psychology, UoB  
Dr Kate Arnold – Professor of Ecology, University of York  
Iman Awi – PhD student, University of Leeds)

Please complete our  
YCEDE Baseline Survey



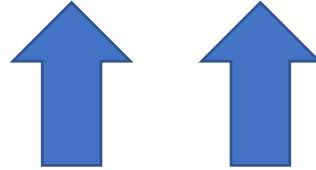
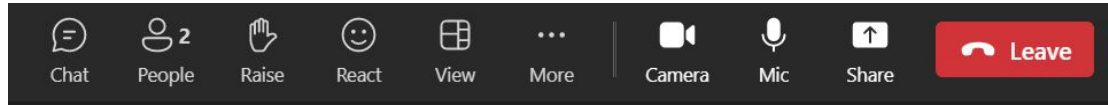
**SCAN ME**

[https://shusls.eu.qualtrics.com/jfe/form/SV\\_cwfW1gOiiSZnWf4](https://shusls.eu.qualtrics.com/jfe/form/SV_cwfW1gOiiSZnWf4)

# We want to hear from you!



- Type your questions in the chat
- Put your hand up using the **Raise** button



# Who is YCEDE?



## Five Yorkshire Universities



# Recap



Yorkshire Consortium for  
Equity in Doctoral Education

- OfS, Research England and YCEDE partners have committed to **invest more than £3.6 million over 4 years** to **improve access and participation of Black, Asian and ethnic minority people in postgraduate research study across Yorkshire.**
- Our project is divided into four workstreams (WS) led by different people and involving all partners:

# This session will cover



Topic	Presenter	Time
Welcome	Tiffany	5 mins
My PhD and Me	YCEDE Scholars	20 mins
Role of the Supervisor	Supervisors	10 mins
Questions	All	20 mins
What Next?	Tiffany	5 mins

# What is a PhD?



Source: <https://www.findaphd.com/guides/what-is-a-phd>



A typical PhD involves:

- Carrying out a **literature review** (a survey of current scholarship in your field).
- Conducting **original research** and collecting your **results**.
- Producing a **thesis** that presents your conclusions.
- **Writing up** your thesis and submitting it as a **dissertation**.
- **Defending** your thesis in an oral **viva voce** exam.

# What is a Phd really?



**Apply**  
**Find a Supervisor**  
**Find Funding**  
**Enroll**  
**Transfer – end of Year 1**  
**Viva – end of Year 3**

## **What they don't tell you...**

You should speak to academics / supervisors before you apply.

Some programmes require a supervisor in place before you apply.

There are many different ways to fund a PhD.

Your research proposal may well change after your transfer (end of Year 1).

What support is in place for PhD students.

# Student Panel



**Zenab Sabahat**

**UNIVERSITY OF BRADFORD**  
PSYCHOLOGY

Development of Myopia across West Yorkshire



**Iman Federico Awi**

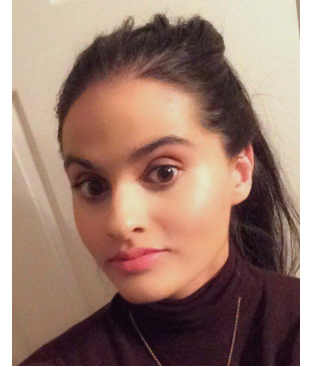
**UNIVERSITY OF LEEDS**  
SCHOOL OF SOCIOLOGY

Part 1:

# My PhD & Me - YCEDE Scholars



- Why I chose a PhD
- When I realised I wanted to do one
- How I got accepted on to a programme
- The methods I am using
- The challenges I have faced
- The support I have received
- **The Hidden Curriculum**



# Supervisor Panel



**Prof Kate Arnold**

**UNIVERSITY OF YORK**  
PROFESSOR OF ECOLOGY  
Dean, York Graduate School



**Dr Syka Iqbal**

**UNIVERSITY OF BRADFORD**  
ASSISTANT PROFESSOR OF PSYCHOLOGY  
School of Social Sciences

# Supervisors



- What is your role - pre application
- What is your role – during PhD
- How much influence do you have over the PhD?
- How should students engage with supervisors?
- Myths around supervisors



# Your Questions



- Raise your hand on Zoom
- Type in the chat
- Private message George to have it read out anonymously

# Webinar support for PhD applicants



Yorkshire Consortium for  
Equity in Doctoral Education

- 02/10/24 – What is a PhD and how to apply
- 16/10/24 – Funding your PhD: White Rose Scholarships
- 22/10/24 – Inclusive Research Network Launch + PGR Q&A
- 28/10/24 – Intro to Research Methodologies
- 07/11/24 – PhD application guidance with the Advocacy Scheme
- 12/11/24 - Putting Passion into your research proposal
- 13/11/24 - Where can a PhD take you?
- 28/11/24 - Interviewing for your PhD: What to expect and How to prepare
- 30/01/25 - Literature Review and What to Expect in Year 1
- 05/02/25 – Preparing for a PhD: YCEDE Research Internships
- 30/04/25 – Managing Professional Relationships as a PGR

For more info  
and to register



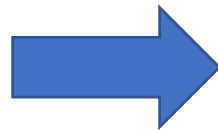
SCAN ME





# Join our Virtual Networks

Join our mailing list using the QR Code and find out about more PhD support from YCEDE.



**Follow our networks for current or future students interested in research or further study in research:**

This card features the LinkedIn logo on the left. To its right is a banner with the YCEDE logo and a purple-to-white gradient. Below the banner, the text reads 'Inclusive Research Network' and 'Public group'. On the right side of the card is a QR code with the text 'SCAN ME' underneath it.

<https://www.linkedin.com/groups/14054108/>

This card features the Twitter logo on the left. To its right is the YCEDE logo. Below the logo, the text reads 'Inclusive Research Network' and '@YCEDENetwork'. On the right side of the card is a QR code with the text 'SCAN ME' underneath it.

<https://twitter.com/YCEDENetwork>

# Paid Internships

<https://ycede.ac.uk/category/internships/>



[ABOUT US](#) ▾

[PROSPECTIVE STUDENTS](#) ▾

[MENTORING](#)

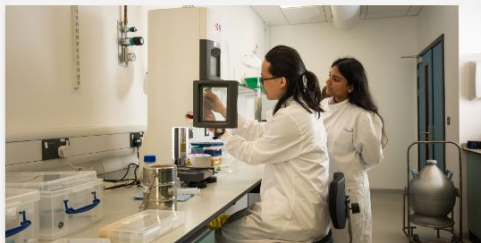
[EVENTS](#)

[BLOG](#)

[CONTACT](#)

[in](#)

[t](#)



## Research internships

YCEDE are funding 32 PAID Research Internships across the consortium of universities each year, to give prospective PhD applicants from Black, Asian and minority ethnic backgrounds additional research experience. The internships offer participants the opportunity to work as professional colleagues in partnership with academic staff, through carrying out independent research. Research interns can see whether they would like to pursue ...

[Read More](#)



## Research Internships at the University of Leeds

Educational Engagement in collaboration with Leeds Institute for Teaching Excellence (LITE) are offering up to 15 research experience placements (REPs) to be completed each academic year until 2025/2026. LITE will provide support and guidance in pedagogic research and act as a community for the successful student researchers on the programme. For examples of previous research placement projects click here. How ...

[Read More](#)

# Funding Opportunities

<https://ycede.ac.uk/category/phd-funding/>



Yorkshire Consortium for  
Equity in Doctoral Education

[ABOUT US](#)

[PROSPECTIVE STUDENTS](#) ▾

[NEWS](#)

[CONTACT](#)

[in](#)



## Funded PhD: Exploring myopia and the effect of lifestyle within Bradford and West Yorkshire

About the Project Myopia, known as short-sightedness, is where distance vision becomes blurry in childhood, causing the need to wear spectacles or contact lenses at all times. The prevalence of myopia has doubled over the last 50 years, and is set to rise in the locally and globally, with 50% of the population becoming myopic by 2050. This is of ...



## Leeds University Faculty of Social Sciences Doctoral Scholarships

The Faculty of Social Sciences, University of Leeds, is inviting applications for the next round of its doctoral scholarship scheme for UK Black, Asian and ethnic minority students to undertake postgraduate/PhD research within the Faculty. Two scholarships are available each year. The Faculty of Social Sciences is committed to addressing different forms of intersecting



## 2023 WRoCAH AHRC Open Competition Studentships

Looking for PhD funding in Arts & Humanities? The WRoCAH competition for PhD studentships starting in October 2023 is now open! The White Rose College of the Arts & Humanities (WRoCAH) is a Doctoral Training Partnership of the Universities of Leeds, Sheffield and York. The College is responsible for the distribution of AHRC-funded doctoral studentships for these universities and for ...

# Useful Links



## Postgraduate Forum

- <https://www.postgraduateforum.com/forum>

## FindaPhd

<https://www.findaphd.com/>

The screenshot shows the homepage of FindaPhd. At the top left is the 'Find a PhD' logo. Navigation links for 'PhDs', 'Guides', and 'Events' are visible. A prominent banner for 'Fully-Funded PhD Studies' from The Hong Kong University of Science and Technology is featured, along with a 'FREE Study Fair in Sheffield' registration link. A search bar at the bottom of the banner contains the text 'Search 4,533 PhD projects &amp; programmes worldwide'. Below the banner, 'Popular Search Categories' are listed with icons for Biological Sciences, Business &amp; Management, Chemistry, Geography, Engineering, Languages, Literature &amp; Culture, Law, Mathematics, Physics, and Sociology.

The screenshot shows the PostgradForum website interface. The top navigation bar includes 'Home' and 'Forum' links, and a 'Sign up / Log in' button. Below the navigation, there's a 'Latest threads' section with a 'New Thread' button. Three featured threads are shown: 'PHD Advice', 'PhD Funding Guides', and 'PhD Study Blog'. A search bar is located below the threads. At the bottom, a table displays a list of forum topics with their respective post and view counts.

Topic	Posts	Views
Ever considered studying a Masters or PhD? by FAUHolly 19 hours ago	1	1
Do you want to learn more about PhD study? by FAUHolly 2 days ago	1	1

# Advocacy

<https://ycede.ac.uk/advocacy/>



Yorkshire Consortium for  
Equity in Doctoral Education

[ABOUT US](#) ▾

[PROSPECTIVE STUDENTS](#) ▾

[MENTORING](#)

[EVENTS](#)

[BLOG](#)

[CONTACT](#)

[in](#)

[t](#)

## YCEDE Advocacy Scheme

The YCEDE Advocacy Scheme is a brand new programme that puts you in touch with an academic or PhD application specialist to help:

- Increase your confidence in approaching supervisors
- Improve your knowledge of the PhD application process
- Create a unique and relevant research proposal (if required)
- Make a high quality application for a PhD



# Feedback



**Yorkshire Consortium for  
Equity in Doctoral Education**

Thank you for your participation today. We would love some feedback on the session. Your feedback is anonymous and is used to improve sessions, inform our planning going forward and is used to evaluate the effectiveness of our work. You are also helping to improve access to PhDs to other prospective students from ethnically minoritised backgrounds.

