



Yorkshire Consortium for Equity in Doctoral Education

Webinar Slides: Where can a PhD take you?

The following slides were used during a webinar for UGs and PGTs interested in applying for a PhD. The webinar explained the potential career paths opened up by completing a PhD, both inside and outside academia, and featured a panel discussion with speakers each at different stages of their post-doctoral careers.

Produced by: George Gisborne (University of Leeds)

13th November 2024

YCEDE cannot guarantee that all information contained in this resource is accurate at the time of reading, particularly with regard to dates, deadlines, and funding availability.

Suggested Audience: Students

Suggested Sub-Audience: Prospective Applicants

This resource is intended for use in improving equity and outcomes for ethnically minoritised individuals interested in doctoral study or careers in research. This resource was produced by the staff named above on behalf of the YCEDE project. Please ensure appropriate credits are clearly included if you use this resource.

TO CITE THIS

Gisborne, G. (2024). *Yorkshire Consortium for Equity in Doctoral Education* [online] available at:
<https://ycede.ac.uk/toolkit/academic-staff-resources/careers-post-doc/webinar-slide-pack-where-can-a-phd-take-you/>



**Yorkshire Consortium for
Equity in Doctoral Education**

Where can a PhD take you?



**University of
Sheffield**

1. Go to wooclap.com
2. Enter the event code in the top banner
Event code - RYGKNN



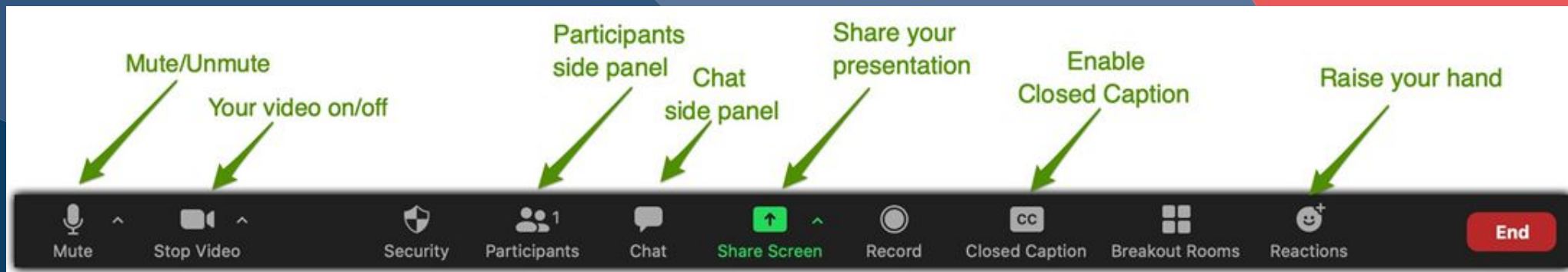
Yorkshire Consortium for
Equity in Doctoral Education



Welcome to the YCEDE Where can a PhD take you? session!

We will mute all participant cameras and microphones during the presentation.

There will be time for questions at the end of the session. You will be able to ask questions by either using the 'raise your hand' function (we will enable your microphone for this) or the Q&A function (only the hosts will see).





Please note this session is being recorded

Please complete the poll

Where can a PhD take you?

Your Hosts:



Dr. Dani Madrid-Morales

Lecturer in Journalism
and Global
Communication

Postgraduate Research
Director

School of Journalism,
Media and
Communication
University of Sheffield



Seetal Jutla **Access Officer**

University of Sheffield

Coordinator of several projects
within the Access Service,
including collaboration with
external partners such as Aziz
Foundation and YCEDE.

Leading on the Race Equality
Strategy for Student Recruitment,
Marketing, and Admissions
(SRMA), and advancing access for
students from diverse
backgrounds.



Yorkshire Consortium for
Equity in Doctoral Education

Where can a PhD take you?

Panel:

Dr. Ian Sullivan, Climate and Education Lead, Fab Inc.

Dr. Dwain Neil OBE, Chairman, Reach Society

Dr. Devesh Mistry, Operational Research Analyst - Team Leader, UK Civil Service

Peter Maguire, Employability Advisor, Careers & Employability Service, University of Sheffield

Dr. Fer Velazquez de la Paz, Commercialisation Manager (Life Sciences), Commercialisation Team,
University of Sheffield

This session will cover



- 12:00 Welcome and Introduction
- 12:10 Panel Spotlight hosted by Dani Madrid-Morales
- 12:30 Panel Discussion
- 13:00 Comfort Break
- 13:05 How can your careers service help you as a PhD student? delivered by Peter Maguire
- 13:20 The Commercialisation Journey delivered by Fer Velazquez de la Paz
- 13:30 Open Forum for Questions hosted by Dani Madrid-Morales
- 13:55 Wrap up and evaluation

What and Who is YCEDE?



Five Yorkshire Universities



UNIVERSITY
of York



White Rose
university consortium



UNIVERSITY of
BRADFORD


UNIVERSITY OF LEEDS



University of
Sheffield

**Sheffield
Hallam
University**



Yorkshire Consortium for
Equity in Doctoral Education

Panel Spotlight

Spotlight on



Dr Devesh Mistry

Operational Research Analyst – Team Leader
UK Civil Service [LinkedIn](#) [Google Scholar](#)

Short Bio:

Undergrad: Physics Master's (always liked learning how things work)

3rd year summer placement: TTP group, Applications Scientist (learned I liked short term industry research projects, but everyone had a PhD)

PhD: Industrially sponsored Physics PhD at Univ Leeds. Great supervisor and opportunity to secure additional funding. Patent led to a spin out! Learned I loved academic research.

Postdoc: Fellowship took me to Mechanical Engineering, Denver, Colorado. Still loved academic research. Started building a network and reputation.

Lectureship: Fellowship and UAF at Univ. Leeds (Physics), built a research group over 3 years with 6 PhD students. Gradually fell out with academia.

Now: Jumped and left academia for the Civil Service. Big risk, but it paid off.



Spotlight on



Dr. Ian Sullivan

Climate and Education Lead, Fab Inc.

Short Bio: Having decided on a career change, I enrolled on *MA Sociology and Social Policy* at the University of Leeds. Following this, I embarked on an interdisciplinary PHD - *Sociology and Human Geography - Climate and Community: Building back better*.

Towards the end of this, I was applying for various academic and non-academic roles and began working for a small development education consultancy. Our work supports development in the education sector in low-and-middle income countries through data supported decision-making. I work with governments and international institutions to understand the relationship between education systems, climate adaptation, and climate resilience.



Spotlight on



Dr Dwain A. Neil OBE, FRSA

Reach Society, Chairman – Inspiring Young People Since 2010

The Chairman's Office, Director

Awarded an OBE in June 2019 for services to the British African Caribbean community.

BSc in Physics and Chemistry, PhD in Nuclear Chemistry, University of Manchester

Career Highlights

Founder of Leriko & Associates (2002–2017), a consultancy specialising in social research, project management, and mentoring; and 21 years at Shell International Chemicals and Services (1979–2000) in business management and recruitment.

Community Engagement (40 years of volunteer service across multiple organisations alongside a full-time career) including:

- Co-founder and Chairman of Reach Society, inspiring young people since 2010
- Trustee, Capital City College Group; former trustee and director of BTEG
- Commissioner with the Commission for Racial Equality (1987-1997)
- Co-founder and Chairman, British Caribbean Junior Chamber of Commerce (1985-1987)





Yorkshire Consortium for
Equity in Doctoral Education

Panel Discussion

1. Go to wooclap.com
2. Enter the event code in the top banner
Event code - RYGKNN

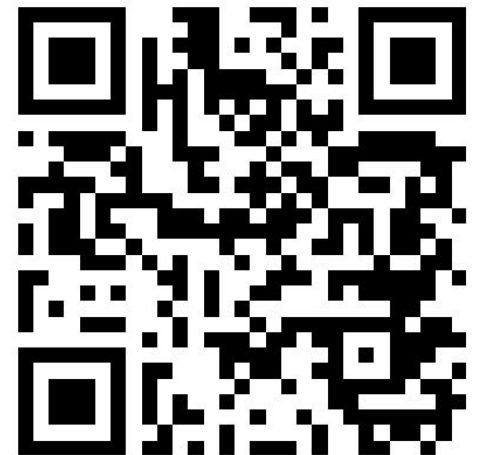




Yorkshire Consortium for
Equity in Doctoral Education

Comfort Break

1. Go to wooclap.com
2. Enter the event code in the top banner
Event code - RYGKNN





Yorkshire Consortium for
Equity in Doctoral Education

Peter Maguire

University of Sheffield



University of
Sheffield

Careers &
Employability
Service

How can your careers service help you as a PhD student?

Peter Maguire

Employability Adviser





What do the doctors do?

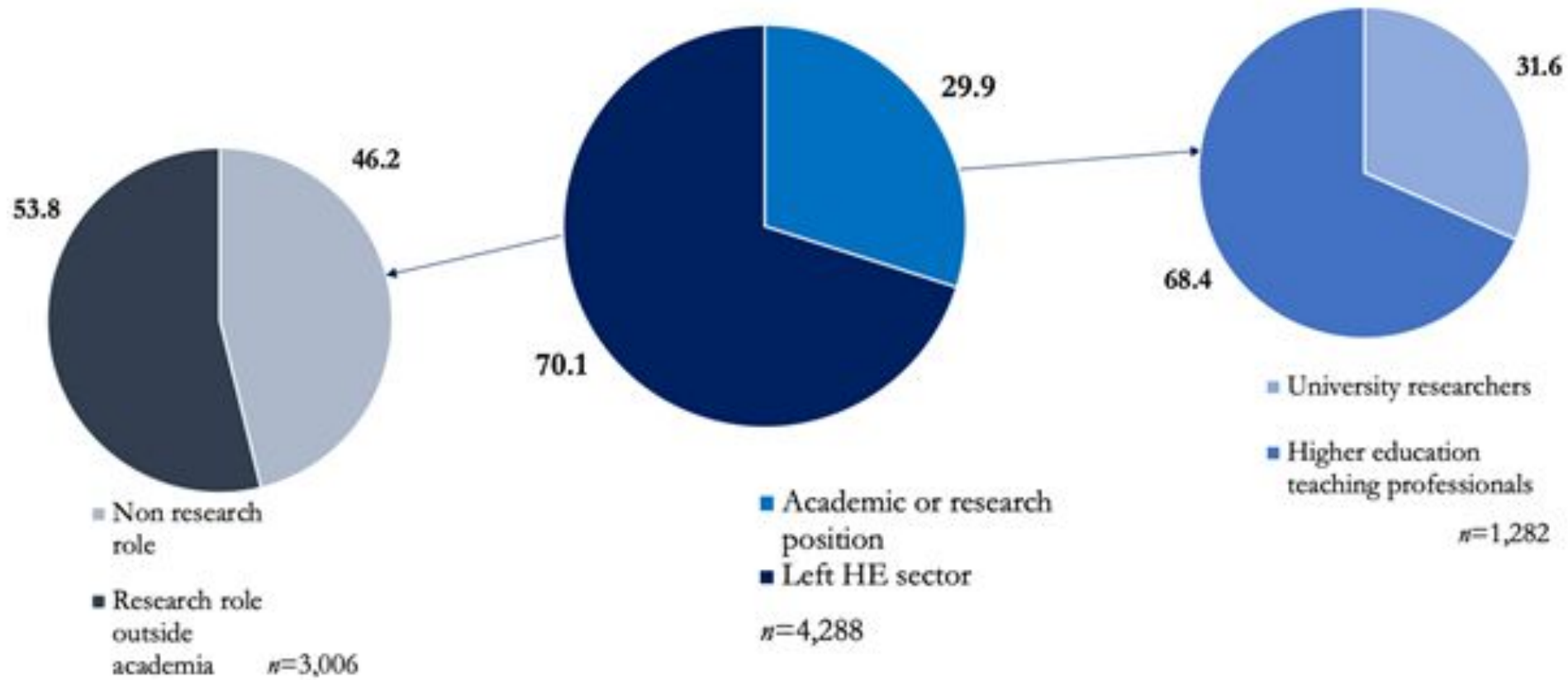


Figure 1. Occupational outcomes of PhD graduates by sector

Range of possible roles

Research roles “in industry”	Roles with elements of/related to research	Roles related to research in HE	Research roles in HE
<p>Senior research scientist, government lab</p> <p>Research assistant, pharma company</p> <p>Water quality scientist, utilities company</p> <p>Archaeologist, NGO</p> <p>Environmental policy analyst, NGO</p> <p>Social science researcher, NHS</p>	<p>R&D manager, chemicals company</p> <p>Quantitative analyst, investment bank</p> <p>Research council officer</p> <p>Risk and data management team leader</p> <p>Science and technology policy specialist</p> <p>Medical writer</p>	<p>Research and knowledge exchange officer</p> <p>Research officer (support for those applying for grants)</p> <p>Researcher development officer (support for post-PhD researchers)</p> <p>Institute/Faculty research facilitator</p> <p>Research impact officer</p>	<p>Research associate</p> <p>Research fellow</p> <p>Research assistant</p>



- Complex problem solving
- Research
- Verbal and written communication
- Critical thinking
- Project management & organisation
- Teamworking
- Ability to work under pressure
- Digital literacy
- Effective networking
- Attention to detail



University of
Sheffield

Careers &
Employability
Service

What to avoid





Your Careers Service can help you to:

- Make career decisions
- Identify your transferable skills
- Make successful job applications
- Understand the jobs market
- Provide opportunities to meet employers and to build a network



University of
Sheffield

Careers &
Employability
Service

Further resources

[Applying for PhDs](#)

[Prospects: PhDs](#)

[Jobs.ac.uk](#)

[FindaPhD](#)

[FindaPhD: Funding Guide](#)

[Vitae: Researcher case studies](#)

[PhD study at University of Sheffield](#)

[UoS Funded training programmes](#)

[UoS Research supervisors](#)





University of
Sheffield

Careers &
Employability
Service

Further support

Webpage: www.sheffield.ac.uk/careers

Questions, CV Boosters, appointments:

<https://students.sheffield.ac.uk/careers/question>

Careers On Demand videos: digitalmedia.sheffield.ac.uk

@unishefcareers     YouTube

Come chat to us at the Careers & Skills Hub

Sheffield Students' Union

Sheffield, S10 2TG





Yorkshire Consortium for
Equity in Doctoral Education

Fer Velazquez de la Paz **University of Sheffield**



Fer Velazquez de la Paz (She/Her)

Commercialisation Manager for Life Sciences
University of Sheffield

- Biotechnology engineer
- Worked in Mexico and Colombia
- MSc and PhD in Biomaterials & Regenerative Medicine at UoS
- Alongside my PGR degree:
 - Note taker Disability and Dyslexia Service
 - GTA / TA for Project Management modules
 - Project Lead Entrepreneurship Team
 - Physics and Maths tutor The Brilliant Club
- Joined the CT in 2022 as Commercialisation Officer - Engineering
- Support more than 50 opportunities undergoing commercialisation, including 2 spinouts and several licence deals.





University of
Sheffield

THE

COMMERCIALISATION

JOURNEY

Objective of The Commercialisation Journey

THE COMMERCIALISATION JOURNEY

A pathway for
innovators to
commercialise
their novel ideas

Objective of The Commercialisation Journey

THE
COMMERCIALISATION
JOURNEY

**And a route to
career
development!**

Two primary outcomes from commercialisation

Spinouts

- Founding a new company based on University intellectual property

Licences

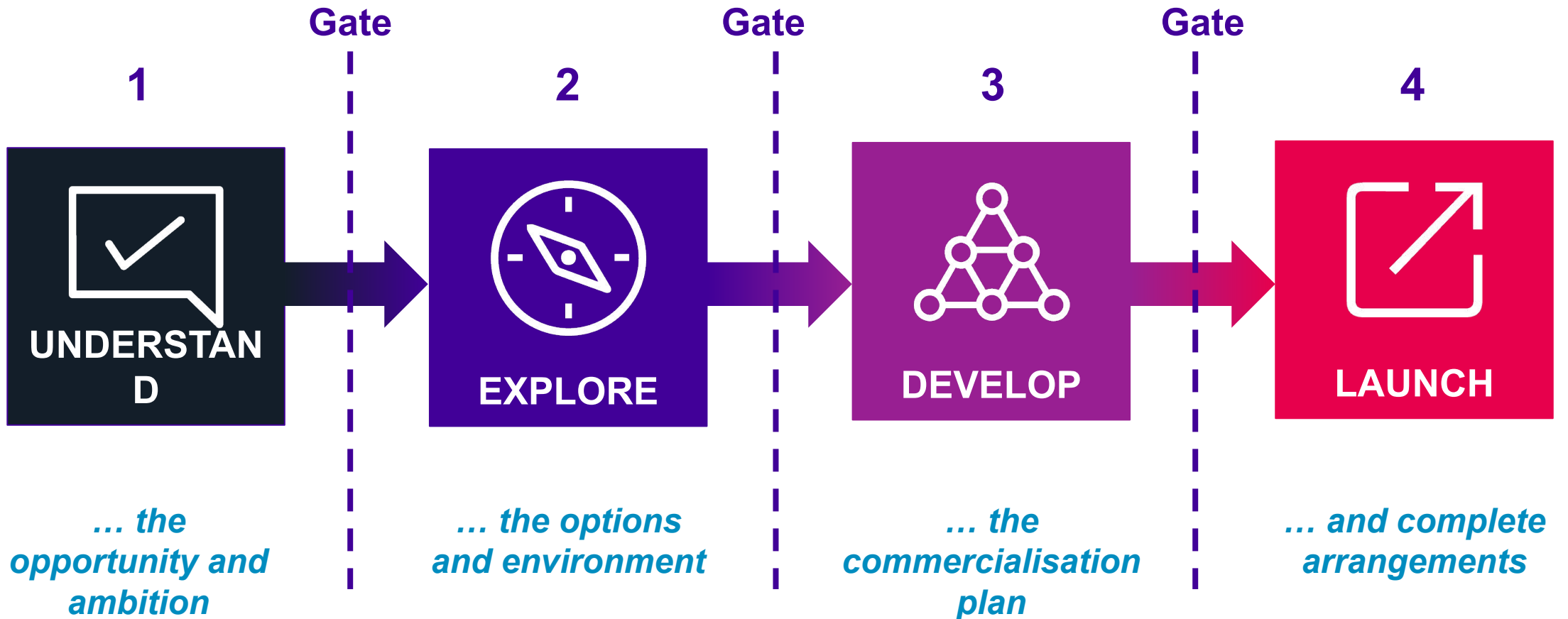
- Granting University intellectual property rights to an existing third party company

Broader impact: research & industry engagement

- Better understanding of the potential users and applications
- Avoiding “*solutions looking for a problem*”
- Ensure intellectual property is identified and protected
- Pathways to impact (and financial return)
- Access to wider (translational) funding options
- Networks of collaborators

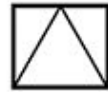
“Commercialisation” doesn’t have to be something that is only done at the end of a research programme - it can also be used to define and direct research

The Commercialisation Journey



The Commercialisation Journey Offer

- 1:1 support
- Information and tools
- University cash investment
- Extensive training and mentoring
- Generous spinout equity terms
- A potential share of revenues



Northern Triangle Mentor
Network

THE
COMMERCIALISATION
JOURNEY

ICUR^e



Innovate
UK



Royal Academy
of Engineering

Broader impact: career development

- Open to all staff and PhD students
- The researcher, inventor, principal investigator and opportunity-lead don't need to be the same person
- Opportunities have been led by technicians, PhD students, research staff and academics



Broader impact: the city of Sheffield



- Spinouts create high quality jobs in our city and have ability to scale rapidly
- A clear opportunity to collaborate with other Sheffield anchor institutions on city vibrancy
- Discussions with Sheffield City Council and Sheffield Hallam University over innovation laboratories and incubator facilities

Broader impact: The North

- Established a new venture capital company
- Raised ~£300 million to invest in IP-rich companies in The North
- [Northern Gritstone](#) is a partner investor of the University and supports The Commercialisation Journey
- However, our spinouts can raise funds from many different sources



How to get involved? Talk to us!



University of
Sheffield

 commercialisationteam@sheffield.ac.uk

 [The Commercialisation Journey](#)

 [Meet the team ...](#)



UNIVERSITY
of York

 commercialisation-team@york.ac.uk

 [York Commercialisation Team](#)



UNIVERSITY OF LEEDS

 commercialisation@leeds.ac.uk

 [Leeds University](#)



UNIVERSITY of
BRADFORD

 [Bradford University](#)



THE
COMMERCIALISATION
JOURNEY

✉ commercialisationteam@sheffield.ac.uk

[in](#) The Commercialisation Journey



Yorkshire Consortium for
Equity in Doctoral Education

Open Forum Q&A

Future Events



Online Webinar

How our Research Internships can prepare you for a PhD

Find out about YCEDE's annual paid research internships offering participants the opportunity to work as professional colleagues in partnership with academic staff, through carrying out independent research.



Wednesday 5 February 2025
12:00pm - 1:00pm
On Zoom

Hear from previous interns now studying PhDs and academic supervisors.

For more information visit <https://ycede.ac.uk/category/events/>

Logos for University of York, University of Leeds, University of Sheffield, Sheffield Hallam University, and University of Bradford.

Literature Review and What to Expect in Year 1

UNIVERSITY of BRADFORD

YCEDE Yorkshire Consortium for Equity in Doctoral Education

Brad-ATTAIN Seminar Series in collaboration with YCEDE

By Dr LaTonia A. Siler-Holloman

30 January 2025 • 12:00 – 13:00



Online Webinar

Managing Professional Relationships as a Doctoral Researcher

This interactive session will look at the types of professional relationships that you will develop as a doctoral researcher, approaches for making them work well for you, and steps to take if they are not.



Wednesday 30 April 2025
1:00pm - 3:00pm
On Zoom

For more information visit <https://ycede.ac.uk/category/events/>

Logos for University of York, University of Leeds, University of Sheffield, Sheffield Hallam University, and University of Bradford.

Getting Published and Creating Impact Mindset for Research


UNIVERSITY of BRADFORD

YCEDE Yorkshire Consortium for Equity in Doctoral Education

Brad-ATTAIN Seminar Series in collaboration with YCEDE

With Sharon Parkinson, Publishing Development Manager, Emerald Publishing

12 March 2025 • 12:00 – 14:00



Opportunities



PGR Advocacy Programme

For UK Black, Asian and minority ethnic students wanting to apply for a PhD.

Speak to PhD supervisors from top research universities.

At least 2-3 hours of dedicated one to one support.

Increase your confidence in approaching supervisors

Improve your knowledge of the PhD application process

Make a high quality application for a PhD



SCAN ME



How our Research Internships can prepare you for a PhD

YCEDE are funding 32 PAID Research Internships across the consortium of universities each year, to give prospective PhD applicants from Black, Asian and minority ethnic backgrounds additional research experience. The internships offer participants the opportunity to work as professional colleagues in partnership with academic staff, through carrying out independent research. Research interns can see whether they would like to pursue ...

[Read More](#)



Research Internships at The University of York

Careers and Placements at The University of York are delighted to be offering research internships to individuals who qualify for UK Home Fee status and self-identify as belonging to an ethnically-minoritised group. York Research Internships are designed to offer individuals from underrepresented groups the opportunity to explore their interest in undertaking a research degree without the need to apply for ...

[Read More](#)

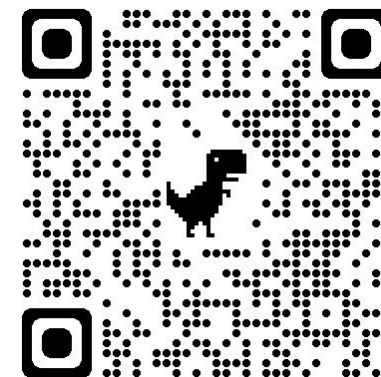


Research internships

YCEDE are funding 32 PAID Research Internships across the consortium of universities each year, to give prospective PhD applicants from Black, Asian and minority ethnic backgrounds additional research experience. The internships offer participants the opportunity to work as professional colleagues in partnership with academic staff, through carrying out independent research. Research interns can see whether they would like to pursue ...

[Read More](#)

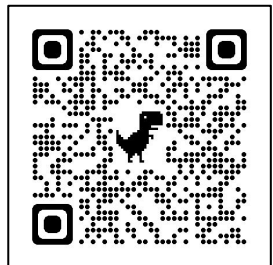
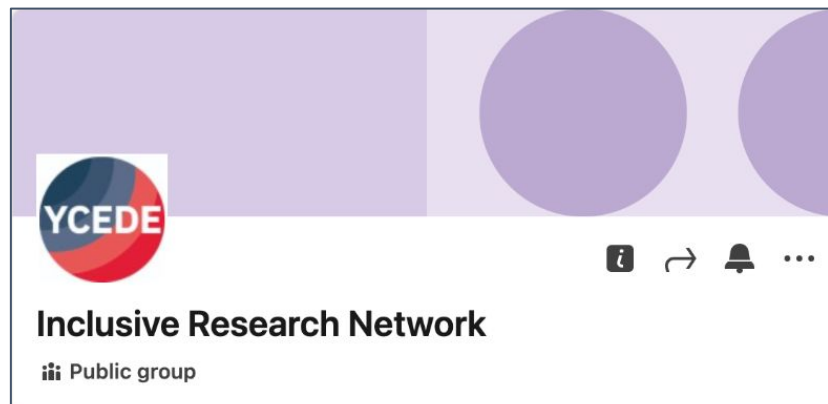
Funding



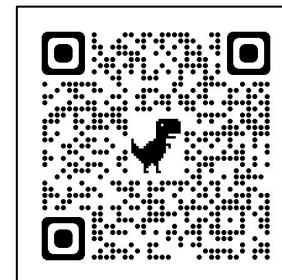
Join our Virtual Networks



Follow our networks for current or future students interested in research or further study in research:



<https://www.linkedin.com/groups/14054108/>



<https://twitter.com/YCEDENetwork>



Evaluation



The Sheffield Institute of Education (SioE) at Sheffield Hallam University (SHU) are part of the YCEDE Partnership, a project funded by the Office for Students (OfS) and UK Research and Innovation (UKRI).

Please complete the survey to help us evaluate the effectiveness of these events.





**Yorkshire Consortium for
Equity in Doctoral Education**

Thank you