



# Yorkshire Consortium for Equity in Doctoral Education

## Webinar Slides: Funding your PhD

The following slides were used during a webinar for UGs and PGTs interested in applying for a PhD. The webinar explained the application and selection process for two White Rose scholarship schemes in Social Sciences and in Arts & Humanities.

**Produced by:** Jack Harris (University of York)

**16th October 2024**

*YCEDE cannot guarantee that all information contained in this resource is accurate at the time of reading, particularly with regard to dates, deadlines, and funding availability.*

**Suggested Audience:** Students

**Suggested Sub-Audience:** Prospective Applicants

*This resource is intended for use in improving equity and outcomes for ethnically minoritised individuals interested in doctoral study or careers in research. This resource was produced by the staff named above on behalf of the YCEDE project. Please ensure appropriate credits are clearly included if you use this resource.*

TO CITE THIS

Harris, J. (2024). *Yorkshire Consortium for Equity in Doctoral Education* [online] available at:  
<https://ycede.ac.uk/toolkit/academic-staff-resources/interviews-and-funding/webinar-slide-pack-funding-your-phd/>



SCAN ME

Please complete our YCEDE baseline survey!!

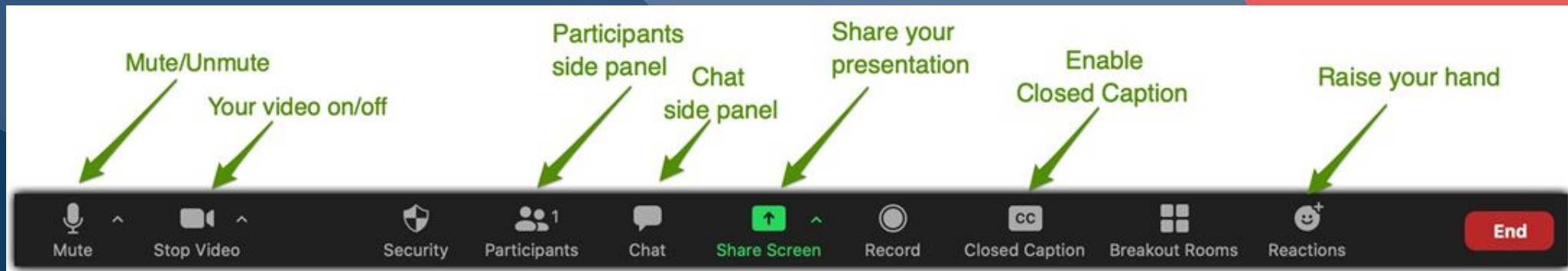


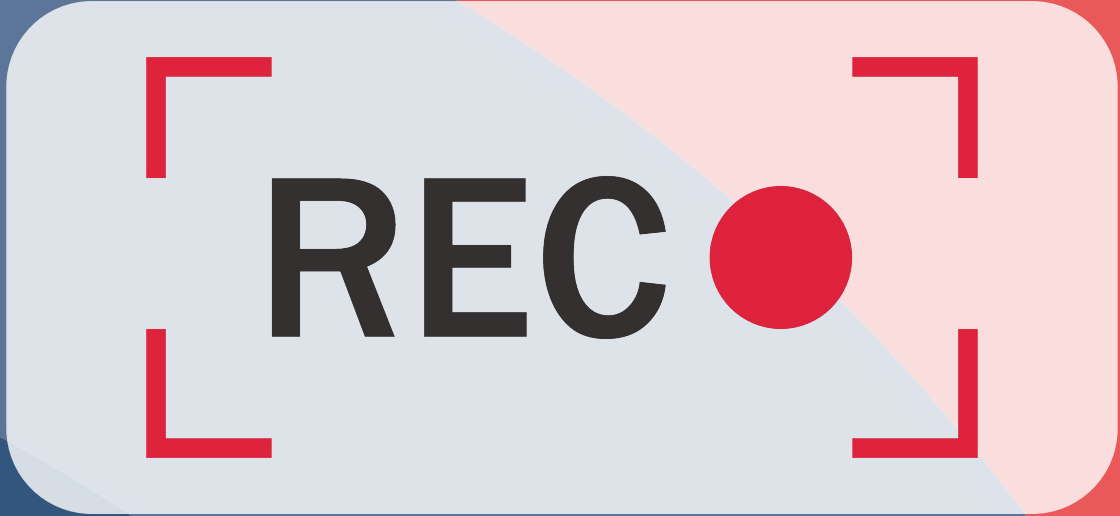
Yorkshire Consortium for Equity in Doctoral Education

## Welcome to the YCEDE Funding your PhD session!

We will mute all participant cameras and microphones during the presentation.

There will be time for questions at the end of the presentation. You will be able to ask questions using the raise your hand function (you will need to enable your microphone for this, and you can choose to share your webcam if you wish) or the chat function.





Please note this session is being recorded



Yorkshire Consortium for  
Equity in Doctoral Education

# Funding your PhD

**Jack Harris**, YCEDE Project Assistant

**Prof Ryan Powell**, Director of the White Rose Social Science DTP

**Charlotte Littlewood**, Scholarships & Funds Officer of the White Rose Social Science DTP

**Jo Cross**, Manager of the White Rose College of Arts and Humanities

**Conwright (CJ) Simon**, White Rose Scholarship Holder

**Ruth Akindele**, White Rose Scholarship Holder

# What are we talking about today?

1. Introduction to YCEDE
2. Funding from Doctoral Training Partnerships
3. Our current PhD students
4. Q+A



# What is YCEDE?

A collaboration between five universities in Yorkshire, 12 UKRI funded Doctoral Training partnerships and Centres for Doctoral Training plus a number of external partners dedicated to equity at doctoral level.

Central to YCEDE is the question of access to doctoral study for graduates from ethnically minoritised backgrounds.



# What does YCEDE want to change?

1. **Widening opportunities** to ensure equity of access to and participation in research.
2. **Changing institutional practices** and culture to reduce inequality in offer rates.
3. Ensuring that we deliver **an excellent experience for ethnically minoritised PGRs** by developing institutions in which they feel a valued part of the wider scholarly community.
4. Provide an evidence base for interventions to share widely across the HE sector and beyond.

# How can you get involved?



**Sign up to our  
Newsletter**



**Follow us on  
LinkedIn**



**Join our Inclusive  
Research Network**



**Follow us on  
Twitter/X**

# Prof Ryan Powell

Director, White Rose Social Science DTP

# Charlotte Littlewood

Scholarships & Funding Officer, White Rose Social Science DTP

# Pathway, AQM and ADA Awards 2025-2026

White Rose Doctoral Training Partnership

Professor Ryan Powell, WRDTP Director

Charlotte Littlewood, WRDTP Scholarships and Funding Officer

# About the WRDTP

- We are an established partnership of the Universities of Leeds, Sheffield, York, Bradford, Hull, Manchester Metropolitan & Sheffield Hallam who have been working together since 2017.
- A total of 63 departments and schools are eligible to host WRDTP-funded students across the social sciences.
- This year we are offering applicants the opportunity to apply for:
  - 35 Pathway Awards, including 2 x Stuart Hall Foundation Awards and 2 x Interdisciplinary Research Awards
  - 2 Advanced Quantitative Methods (AQM) Awards
  - 2 Advanced Data Analytics (ADA) Awards

# What's on offer

# A range of awards

- Our fully-funded PhD studentships will equip the next generation of social science researchers with the skills and knowledge necessary to address the most pressing challenges facing the world today.
- Our **Pathway Awards** offer applicants the opportunity to develop proposals for impactful social science research that engages with the key themes and challenges identified in our thematic interdisciplinary pathways.
- Our **Advanced Quantitative Methods (AQM) Awards** are aimed at applicants who will use cutting edge quantitative research methods to facilitate impactful research that is aligned with our thematic interdisciplinary pathways.
- Our **Advanced Data Analytics (ADA) Awards** are aimed at applicants who will use cutting edge data analysis techniques (which can be quantitative and/or qualitative), or will deploy large scale or 'big' data, to facilitate impactful research that is aligned with our thematic interdisciplinary pathways.

# Flexible doctoral programmes

- Applicants without a social science masters degree will normally be funded for a 1 year MA Social Research followed by a 3.5 year PhD.
- Applicants with a social science masters degree but without 60 credits of M-level research training will normally be funded for a 3.75 year integrated PGCert/PhD.
- Applicants with 60 or more credits of social science M-level research training will normally be funded for a 3.5 year PhD.
- Supervisors will work with applicants to identify the most appropriate programme based on prior academic experience.

# Opportunities for professional development

- All our awards include a 3-month 'Research in Practice' placement. This is an exciting opportunity to apply your research skills in a non-academic setting and acquire important personal and professional skills.
- You do not need to have identified a placement to apply for a studentship.
- Information about placement needs will be captured via a Development Needs Analysis (DNA) once a student has registered.
- RIP will be flexible in terms of timing and format, and can be taken part-time.
- The WRDTP will offer a range of placement opportunities each year with a variety of partners. You can also negotiate your own placement.

# Working in our interdisciplinary pathways

- Our pathways focus on pressing challenges facing the world today, and bring together researchers from a range of disciplinary backgrounds who are working on issues of shared concern.
  - Civil Society, Development, and Democracy (CDD)
  - Digital Technologies, Communication and Artificial Intelligence (DCA)
  - Education, Childhood and Youth (ECY)
  - Security, Conflict and Justice (SCJ)
  - Space, Place, Environment and Liveability (SPEL)
  - Sustainable Growth, Business, Work and Economic Productivity (SBE)
  - Wellbeing, Health and Communities (WHC)

# A package of funding

- Studentships can be awarded on a part-time or full-time basis.
- We welcome applications from home and international students.
- Studentships include tuition fees, plus the standard UKRI stipend to support living costs. This will be paid for the full duration of the award, i.e. the length of the programme.
- Students will also have access to other pots of money to support their research and development, e.g. a research training support grant, overseas fieldwork expenses, difficult language training.
- AQM and ADA awards also include an enhanced research training support grant to enable students to undertake training in advanced quantitative and data methods.
- **If you are an international student, speak to your chosen university at the earliest opportunity as UKRI places limits on the number of awards that can be made to international students.**

# Stuart Hall Foundation Awards

- The WRDTP is delighted to be able to work with the Stuart Hall Foundation (SHF) to support two studentships for Black British applicants. The WRDTP is keen to start addressing historic structural inequalities in education through its partnership with SHF.
- There are **2 x WRDTP/SHF Awards**, which are open to Black British students (Black or Black British African, Black or Black British Caribbean, Black or Black British other or Mixed Black or Black British).
- SHF scholars benefit from the networks and support of the Stuart Hall Foundation.

# Partnership with the Stuart Hall Foundation

- Inspired by the life and work of Professor Stuart Hall, the Stuart Hall Foundation is committed to public education, addressing urgent questions of race and inequality in culture and society through talks and events, and building a network of SHF scholars and artists in residence.
- It works collaboratively to forge creative partnerships in the spirit of Stuart Hall; thinking together and working towards a racially just and more equal future.

STUART HALL  
FOUNDATION



# How do the WRDTP/SHF Awards differ from standard Pathway Awards?

- Candidates will have research interests identifying with Professor Stuart Hall's research legacy:
  - Securing wider access to education, race, ethnicity, cultural studies and structural inequalities.
- Awardees work with SHF to develop their career and profile.
- Access to SHF resources and networks.
- Annual gathering of Scholars and Fellows.
- Wider WRDTP cohort building training events and activities.

# What we're after

# Motivated students with excellent ideas

- We seek to champion cutting-edge research in the social sciences that addresses some of the world's most pressing problems.
- We are looking for motivated students with excellent ideas and a clear sense of how their proposed programme of social science research will make a difference, and shape how we understand our world and the problems that are faced.
- As a partnership we are committed to equality, diversity and inclusion; interdisciplinarity; academic rigour and excellence; and collaboration.
- Each year, we welcome students from a wide variety of academic backgrounds, and with a diverse range of lived experiences and perspectives, from countries worldwide.

# Interdisciplinary research with societal benefits

- We are organised around seven thematic interdisciplinary pathways, which bring together researchers from a range of disciplinary backgrounds working in areas of common interest. All of our funded students are aligned to at least one of our pathways, each of which offer a range of training and development opportunities.
- We are also committed to funding research that has the potential to benefit society and the economy, and which is relevant to non-academic audiences locally and more widely. All applications should have a clear sense of the potential benefits and likely non-academic audiences, as well as a plan for how these benefits will be realised.

# 1. Project excellence (double-weighted)

- An excellent application will demonstrate all of the following, i.e. all of the areas are ‘excellent’:
  - Excellent explanation of the significance of the project and the contribution it will make to academic and empirical knowledge.
  - Excellent research design, which draws on an appropriate range of methods and data sources, and which is feasible within the funded period.
  - Excellent consideration of the likely ethical issues and awareness of own positionality, as appropriate to the nature of the research.
  - Excellent consideration of the likely contingency plans required in the event that the research cannot proceed as planned, and to and to ensure submission within the funded period.
  - For AQM and ADA applicants only: Excellent use of appropriate advanced quantitative methods (AQM awards) or advanced data analytics (ADA awards) to address the research problem.

# 1. Project excellence (double-weighted)

- This section is broken down into a series of short fields to help you address the assessment criteria.
- When thinking through your research ideas, it is important that you are realistic about the scope and scale of your project to ensure that your research can be completed on time (i.e. your thesis needs to be submitted within the funding period). We want to ensure that our students undertake high-quality, yet manageable, research projects so that they are not overburdened.

## 2. Fit with WRDTP core priorities

- An excellent application will demonstrate all of the following, i.e. all of the areas are ‘excellent’:
  - Excellent explanation of how the project fits with the WRDTP’s thematic interdisciplinary pathways.
  - Excellent account of the likely societal benefits of the project, and the steps that will be taken to realise these benefits.
- Please note that there is no expectation that an applicant will have arrangements or pre-existing relationships in place to facilitate impact. The core purpose of this section is for applicants to demonstrate their understanding of the research’s potential benefits and their ideas for realising them.

## 3. Motivation and potential

- An excellent application will demonstrate all of the following, i.e. all of the areas are ‘excellent’:
  - Excellent explanation of the applicant’s motivation to undertake the specific programme of research outlined in the application.
  - Excellent explanation and evidence of the applicant’s potential to undertake doctoral level research.

## 3. Motivation and potential

- This section should focus specifically on the programme of research itself. You should explain why you believe this programme of research is necessary and why the research problem that you have identified needs addressing.
- Applicants have a diverse range of experiences and skills, and evidence of potential can take many forms. This may include academic achievements, but can also include a much wider range of professional, voluntary or personal achievements. We also recognises the vital importance of transferable skills, such as resilience, adaptability, project management and the ability to deliver to deadlines.

# Explain why you have applied for the WRDTP/SHF Pathway Award (300 words max).

You should focus on how your proposed research fits with the SHF mission and values, and the potential wider benefits to society.

You may also want to reflect on how your own personal experiences align with the SHF mission and values.

An excellent application will offer ‘a cogent, compelling, imaginative, well-structured, and clearly argued statement that shows excellent potential. It engages with, and advances, the SHF mission and values clearly, and identifies and demonstrates sustainable links between the PhD project and the proposed WRDTP pathway. It outlines the clear added value that the award will offer to the candidate, and to wider debates and society.’

You can [read the assessment criteria here](#).

# How to apply

# The application process

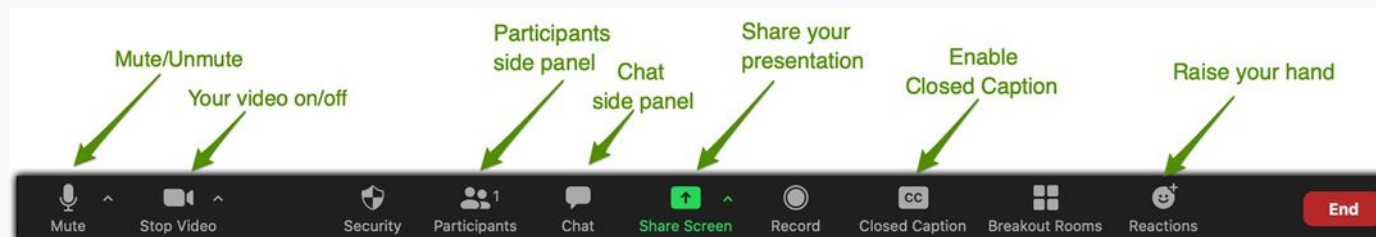
- Pathway, AQM and ADA awards are student-led. We encourage you to discuss your application with your supervisor and to allow enough time to develop a robust programme of research.
- To be eligible for a WRDTP award, you must hold an offer for a PhD place in an eligible school or department, and must be intending to undertake a social sciences research project that is within the ESRC's remit.
- You do not apply directly to the WRDTP for an award, but are instead nominated by your university. You should therefore allow sufficient time to liaise with potential supervisors. You should also ensure that you observe any processes or deadlines that the individual department, school or university has in place for assessing applications.
- As part of the nomination process, you will be required to complete a WRDTP Studentship Application Form. Please note that this is a separate process, and is in addition to any form that you may have completed when applying for a place to study a PhD at your chosen university.

# The application process

- The final deadline for you to apply to your chosen university for a place on the PhD programme is 17:00 on 22 January 2025.
- **Please note that some departments/schools may set earlier internal deadlines by which they need to have received your application. It is your responsibility to consult with the department/school you are applying to for your PhD to confirm the process.**
- Please be aware that all deadlines are fixed, and that extensions will not be granted. Late nominations will not be accepted.
- All applications are assessed against the WRDTP's Studentship Assessment Criteria by two independent assessors drawn from our seven WRDTP universities. WRDTP/SHF Awards are also assessed by a sub-panel of the WRDTP Academic Quality Committee, using the WRDTP/SHF assessment criteria, and awards are made subject to final agreement by the SHF's Academic Committee.
- The WRDTP AQC moderation assessment panel meets on 3 April 2025 and decisions will be communicated to your university w/c 14 April 2025.

# Any questions?

- Raise your hand to ask a question. We will take questions in order. Please unmute your microphone and video when we get to your turn.
- You can also use the chat function.



# Jo Cross

Manager, White Rose College of Arts and Humanities DTP

# A PhD with the White Rose College of the Arts & Humanities (WROCAH)



Jo Cross  
office@wrocah.ac.uk





# What is WRoCAH?

**Universities of York, Leeds and Sheffield**

- AHRC Doctoral Training Partnership
- All Russell Group universities
- Shared resources, training and funding
- Collegiate, collaborative and friendly



**UNIVERSITY OF LEEDS**



The  
University  
Of  
Sheffield.



UNIVERSITY  
*of York*

# Who will you work with?

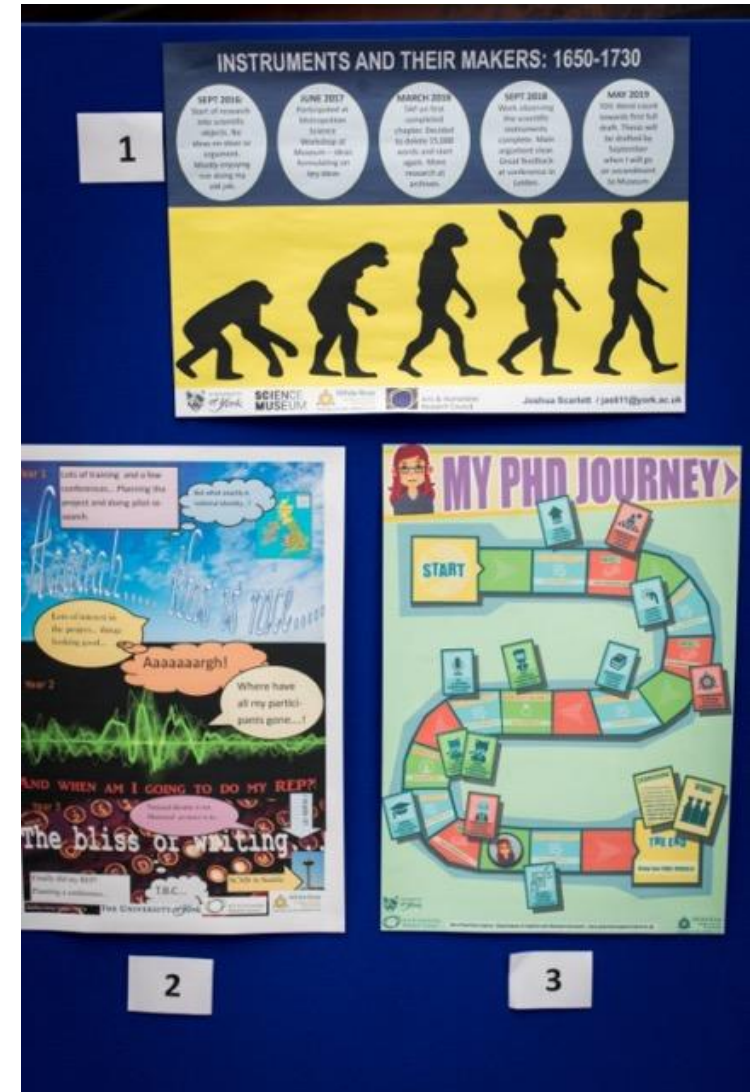
- Around 200 doctoral researchers across three universities
- 500+ alumni
- 24 core partner organisations
- 350+ partner organisations worldwide



# What does WRoCAH do for you?

Valuable support with:

- Research
- Researcher training
- Personal development
- Collaboration opportunities across a well established 3-university research community



The image displays three posters. The top poster, labeled '1', is titled 'INSTRUMENTS AND THEIR MAKERS: 1650-1730' and features a timeline of milestones from September 2016 to May 2019, including the start of research, participation in a workshop, completion of a chapter, and the start of a book. Below the timeline is a silhouette of human evolution. The bottom-left poster, labeled '2', is titled 'The bliss of writing' and includes a speech bubble saying 'Aaaaaaargh!' and the text 'Where have all my participants gone...?'. The bottom-right poster, labeled '3', is titled 'MY PHD JOURNEY' and shows a circular path with various icons representing different stages of a PhD journey.

# Two types of award:

## Open Competition Awards

- Student-led projects
- Apply for a PhD place
- Then apply for funding from WRoCAH
- Closing deadline

**5pm GMT Wed 22 January 2025**

# Two types of award:

## Collaborative Doctoral Awards

- Defined projects (list available on the website from February 2025)
- Apply to be the student working on this project via the project supervisor(s)
- Closing deadline – 5th March 2025

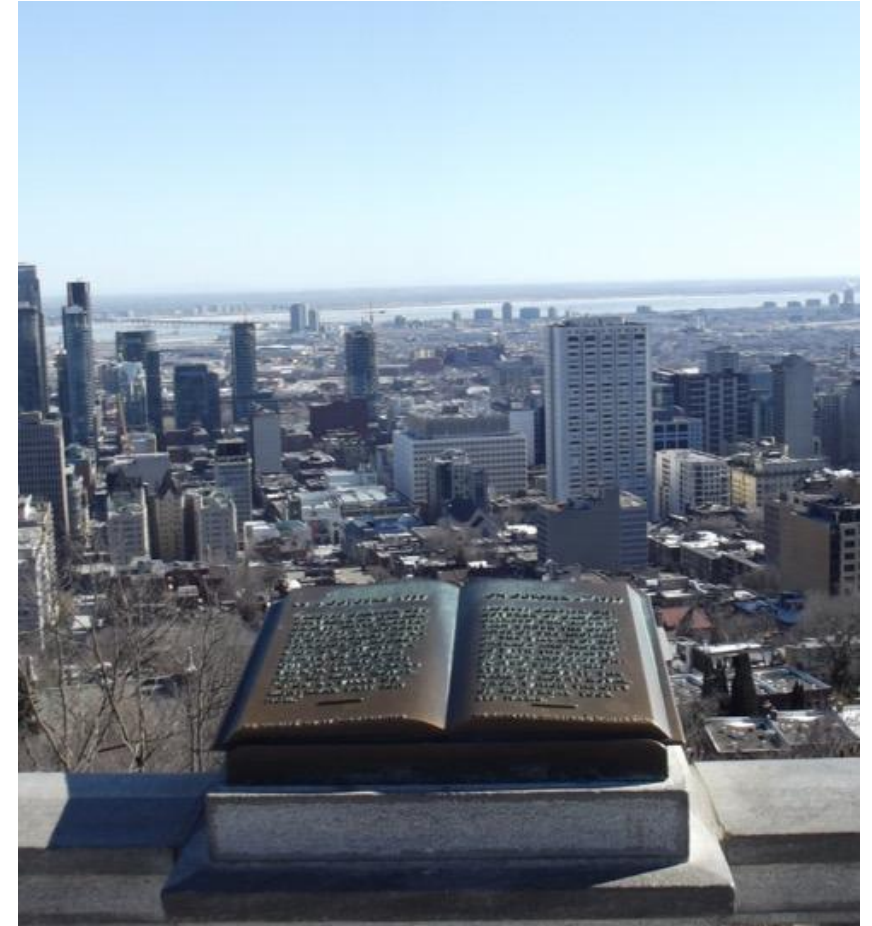
# WRoCAH Activities

**You will be required to:**

- Attend all WRoCAH whole cohort events

**AND complete 3 activities:**

- **Internationalisation** (Year 1 – PhD-related)
- **Researcher Employability Project** (Year 2 – unrelated to your PhD)
- **Knowledge Exchange Project** (Year 3 – PhD-related)





Arts and  
Humanities  
Research Council



White Rose  
College of the Arts  
& Humanities  
Universities of Leeds, Sheffield & York



UNIVERSITY  
*of York*

# Award value

- **AHRC Home rate** Research Degree Fees paid for 3 years
- Plus a tax-free stipend of £19,237 per year (2024/25 rate)
- Initial offer of an additional 4 months for completing compulsory project AHRC/WRoCAH activities = initial offer of 40 months

# Extra funding

For research, training, conferences and more

- Small Awards (up to £350)
- Large Awards (up to £1500)
- Student-Led Forums



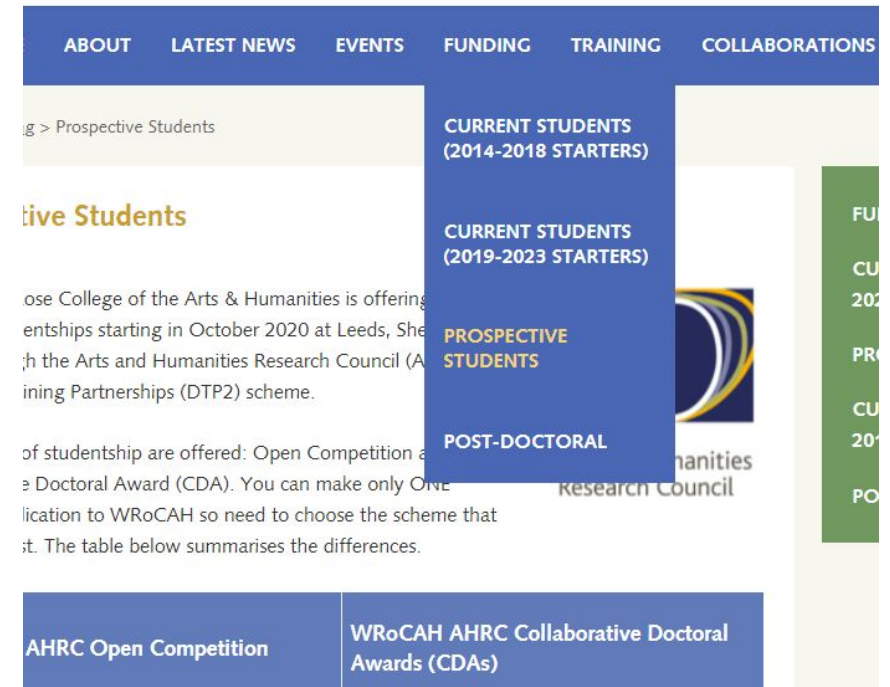
# How to apply

Competition opens on 28th October 2024

- WRoCAH Website > Funding > Prospective Students
- <https://wrocah.ac.uk/funding/prospective-students/>

Closing deadline of 17:00 on Wednesday  
22<sup>nd</sup> January 2025

Twitter  
Facebook



ABOUT LATEST NEWS EVENTS FUNDING TRAINING COLLABORATIONS

Home > Prospective Students

Prospective Students

White Rose College of the Arts & Humanities is offering studentships starting in October 2020 at Leeds, Sheffield and York in partnership with the Arts and Humanities Research Council (AHRC) under the Training Partnerships (DTP2) scheme.

Studentships are offered: Open Competition and Collaborative Doctoral Award (CDA). You can make only one application to WRoCAH so need to choose the scheme that suits you best. The table below summarises the differences.

AHRC Open Competition	WRoCAH AHRC Collaborative Doctoral Awards (CDAs)

# Application process

**wrocah.ac.uk for full details**

- 22 January 2025 – closing deadline
- Early March 2025 – applicants informed if they have made the final stage
- 31 March 2025 – studentships awarded



Arts and  
Humanities  
Research Council



UNIVERSITY  
*of York*

# Application criteria

[www.wrocah.ac.uk](http://www.wrocah.ac.uk) for full details

- Quality of Applicant
- Quality of Project
- Engagement with WRoCAH

# Let's meet our current PhD students!

Conwright (CJ) Simon  
Ruth Akindele

# Ask our current PhD students!

If you have any burning questions about PhD funding then now is the time

# How can you get involved?



**Sign up to our  
Newsletter**



**Follow us on  
LinkedIn**



**Join our Inclusive  
Research Network**



**Follow us on  
Twitter/X**

# Webinar support for PhD applicants



Yorkshire Consortium for  
Equity in Doctoral Education

- 22/10/24 – Inclusive Research Network Launch + PGR Q&A
- 28/10/24 – Intro to Research Methodologies
- 07/11/24 – PhD application guidance with the Advocacy Scheme
- 12/11/24 - Putting Passion into your research proposal
- 13/11/24 - Where can a PhD take you?
- 28/11/24 - Interviewing for your PhD: What to expect and How to prepare
- 30/01/25 - Literature Review and What to Expect in Year 1
- 05/02/25 – Preparing for a PhD: YCEDE Research Internships
- 30/04/25 – Managing Professional Relationships as a PGR

For more info  
and to register



SCAN ME



# Funding Opportunities

<https://ycede.ac.uk/category/phd-funding/>



Yorkshire Consortium for  
Equity in Doctoral Education

[ABOUT US](#)

[PROSPECTIVE STUDENTS](#) ▾

[NEWS](#)

[CONTACT](#)



## Funded PhD: Exploring myopia and the effect of lifestyle within Bradford and West Yorkshire

About the Project Myopia, known as short-sightedness, is where distance vision becomes blurry in childhood, causing the need to wear spectacles or contact lenses at all times. The prevalence of myopia has doubled over the last 50 years, and is set to rise in the locally and globally, with 50% of the population becoming myopic by 2050. This is of ...



## Leeds University Faculty of Social Sciences Doctoral Scholarships

The Faculty of Social Sciences, University of Leeds, is inviting applications for the next round of its doctoral scholarship scheme for UK Black, Asian and ethnic minority students to undertake postgraduate/PhD research within the Faculty. Two scholarships are available each year. The Faculty of Social Sciences is committed to addressing different forms of intersecting



## 2023 WRoCAH AHRC Open Competition Studentships

Looking for PhD funding in Arts & Humanities? The WRoCAH competition for PhD studentships starting in October 2023 is now open! The White Rose College of the Arts & Humanities (WRoCAH) is a Doctoral Training Partnership of the Universities of Leeds, Sheffield and York. The College is responsible for the distribution of AHRC-funded doctoral studentships for these universities and for ...

# Feedback



**Yorkshire Consortium for  
Equity in Doctoral Education**

Thank you for your participation today. We would love some feedback on the session. Your feedback is anonymous and is used to improve sessions, inform our planning going forward and is used to evaluate the effectiveness of our work. You are also helping to improve access to PhDs to other prospective students from ethnically minoritised backgrounds.





Yorkshire Consortium for  
Equity in Doctoral Education

# Thank you for joining us!

Find out more about the opportunities available to you through our social media:



[www.ycede.ac.uk](http://www.ycede.ac.uk)



[@theYCEDE](https://twitter.com/theYCEDE)



[info@ycede.ac.uk](mailto:info@ycede.ac.uk)



[YCEDE](https://www.linkedin.com/company/ycede)